



PEARLY KING



BUKKEHAVE is a Danish jewellery brand that has been designing original and brave contemporary pieces of jewellery since 2011. The company's style is based on goldsmith Christine Bukkehave's unique and explicitly Scandinavian sense of aesthetics and BUKKEHAVE's designs are often inspired by organic and abstract forms found in nature. By letting these natural forms collide head on with strict and minimalistic design elements, Christine Bukkehave achieves a style that is both full of contrast and opposing themes. Just like modern life itself.

To follow up on this theme, BUKKEHAVE has always worked with combining classic and alternative materials. Christine Bukkehave has great passion and respect for more standardized metals like gold and silver but she is not afraid to have them clash with more exotic materials and various gems.

BUKKEHAVE incorporates these clashes between the safe and the untested, the raw and the frail, between the city and the countryside, between culture and nature in all of our product and it is our artistic ambition to never rest on any laurels and instead keep challenging the boundaries of this ancient and truly magnificent craft.

Every BUKKEHAVE design is made by hand and has been carefully chosen with great emphasis on originality, quality and good craftsmanship.

Pearly King is the latest jewellery collection from BUKKEHAVE. The line features designs that are elegant, sophisticated and pure yet also raw, edgy and full of conflict.

Pearls are one of the most classic fashion elements and they have been amongst the cornerstones of jewelry since humans started to first wear finery. With Pearly King BUKKEHAVE seeks to explore this ancient material with a modern and contemporary approach. By combining beautiful pearls with various forms of polished silver and mother of pearl BUKKEHAVE has achieved a cool and strict look that ems of Scandinavia and the great reaches of the northern regions.



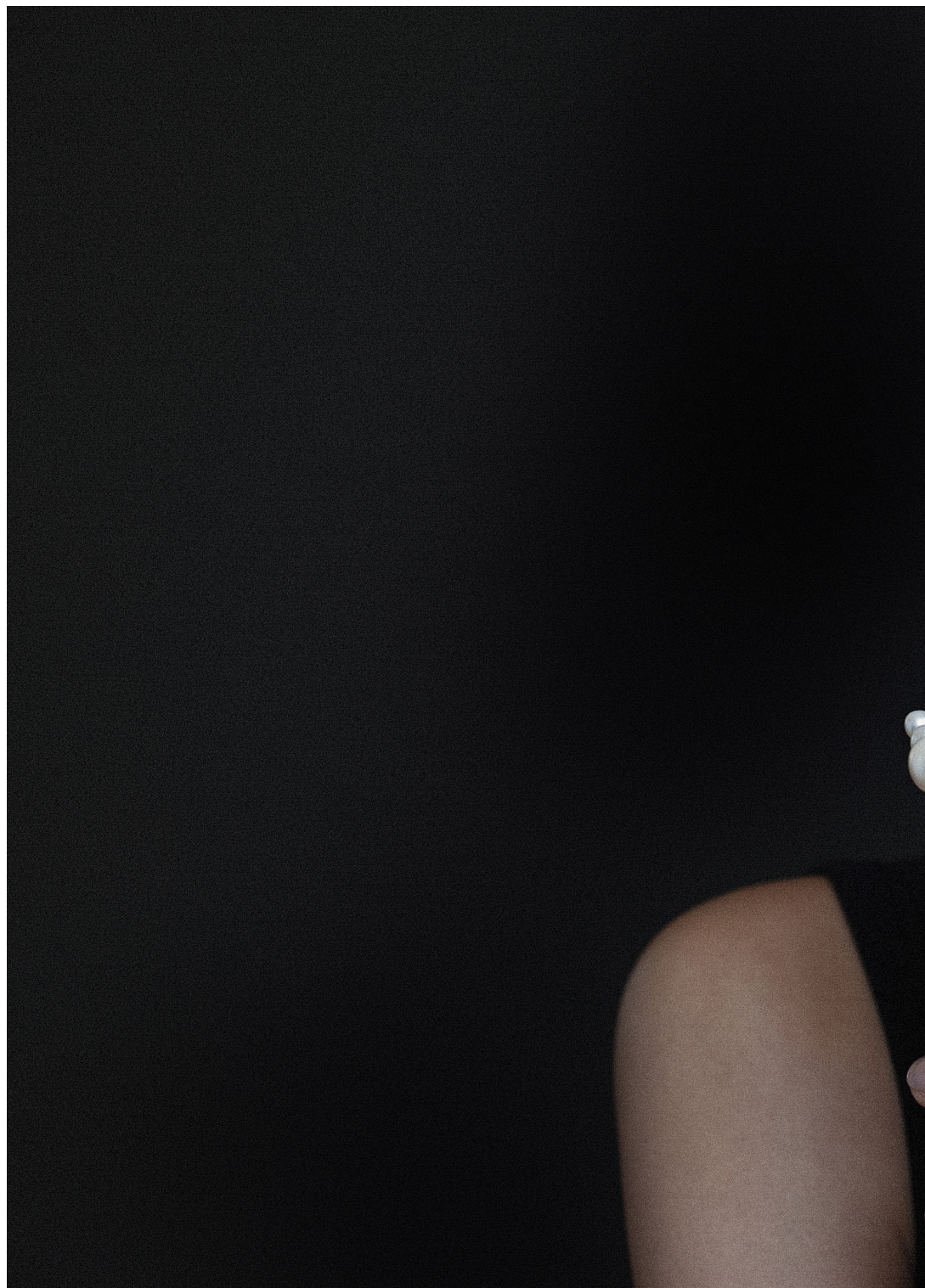
Pearly King Ring#01
-silver, freshwater pearl



Pearly King Ring#02
-silver, freshwater pearls



Pearly King Ring#03
-silver, freshwater pearls











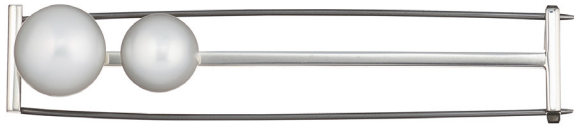
Pearly King Bracelet#01
-silver, freshwater pearl



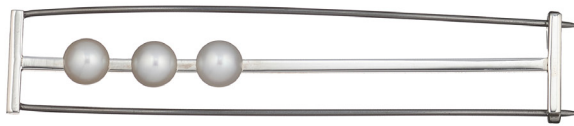
Pearly King Bracelet#02
-silver, freshwater pearls



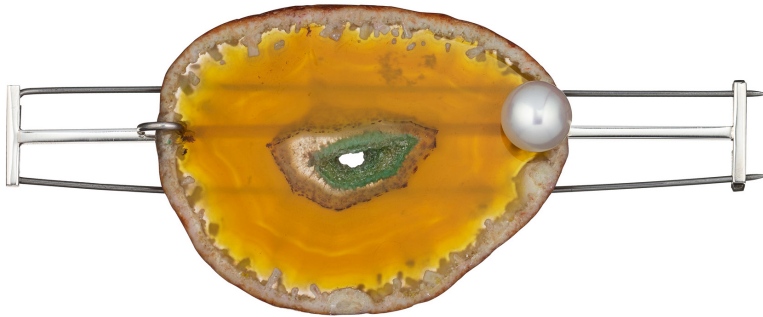




Pearly King Brooch#01
-silver, steel, freshwater pearls



Pearly King Brooch#02
-silver, steel, freshwater pearls



Pearly King Brooch#03
-silver, steel, freshwater pearl, agate



Pearly King Brooch#04
-silver, steel, freshwater pearl, agate



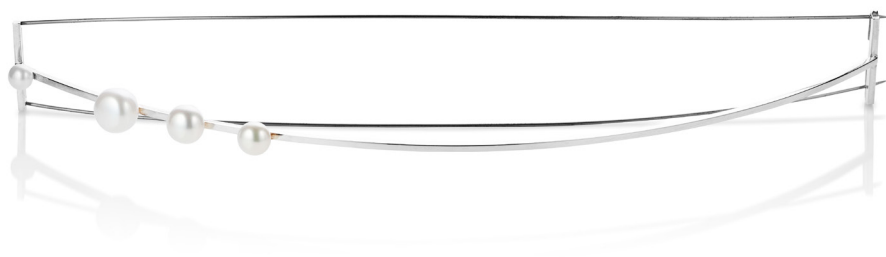
Pearly King Curved#01
-silver, steel



Pearly King Curved#02
-silver, steel, freshwater pearl



Pearly King Curved#03
-silver, steel, freshwater pearls



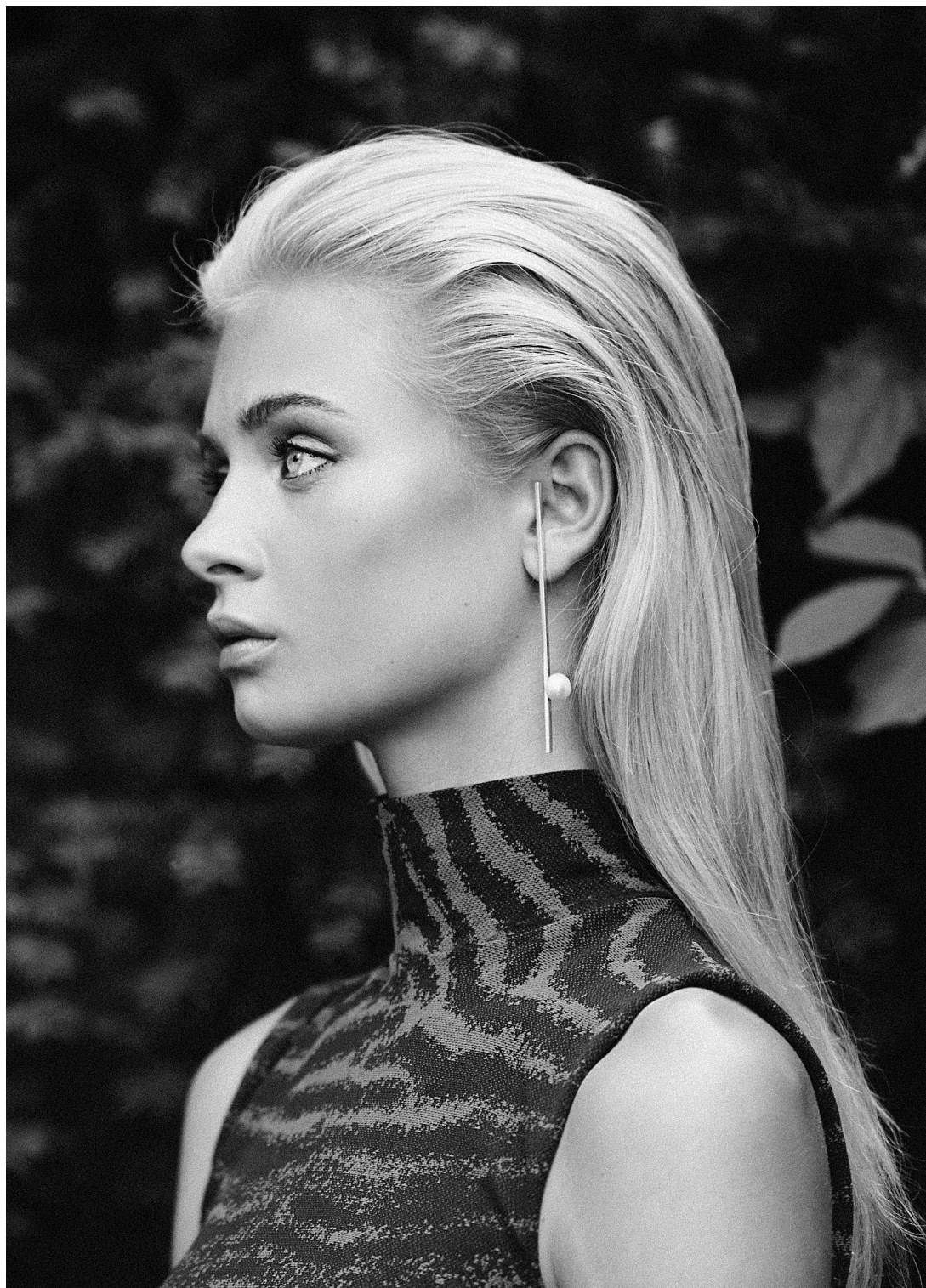
Pearly King Curved big#04
-silver, steel, freshwater pearls





Pearly King Baroque Necklace
-silver, freshwater pearl







Pearly King Earring#01
-silver, freshwater pearls



Pearly King Earring#02
-silver, freshwater pearls



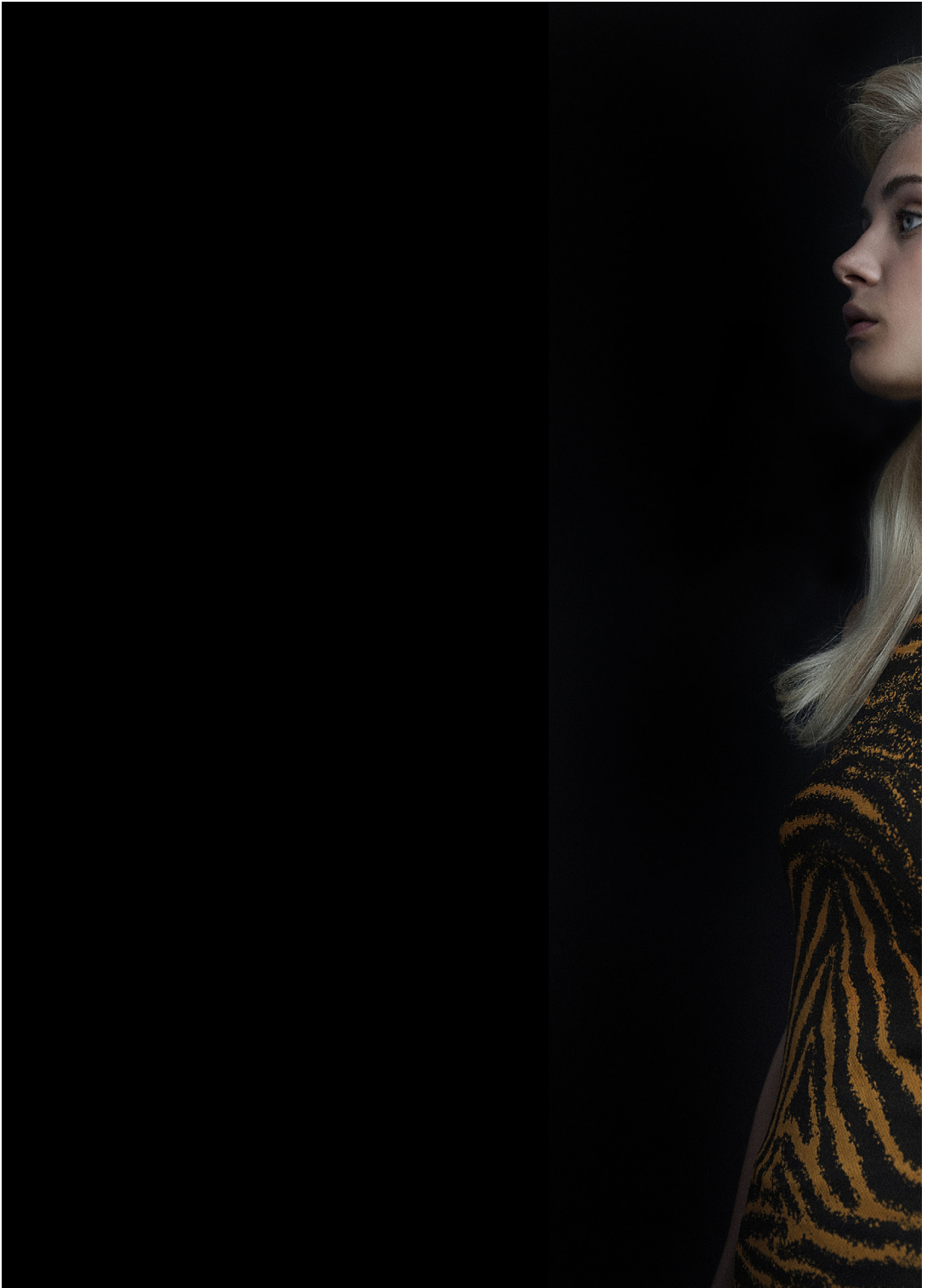
Pearly King Earring#03
-silver, freshwater pearls



Pearly King Ear cuff
-silver, freshwater pearl



Pearly King Noserling
-silver, freshwater pearl







www.christinebukkehave.dk
info@christinebukkehave.dk
CVR: 32861725

**BUKKE
HAVE**

Photographer: Simon Knudsen - Hair and makeup: Rosalina Johnson - Model: Clara Rosager